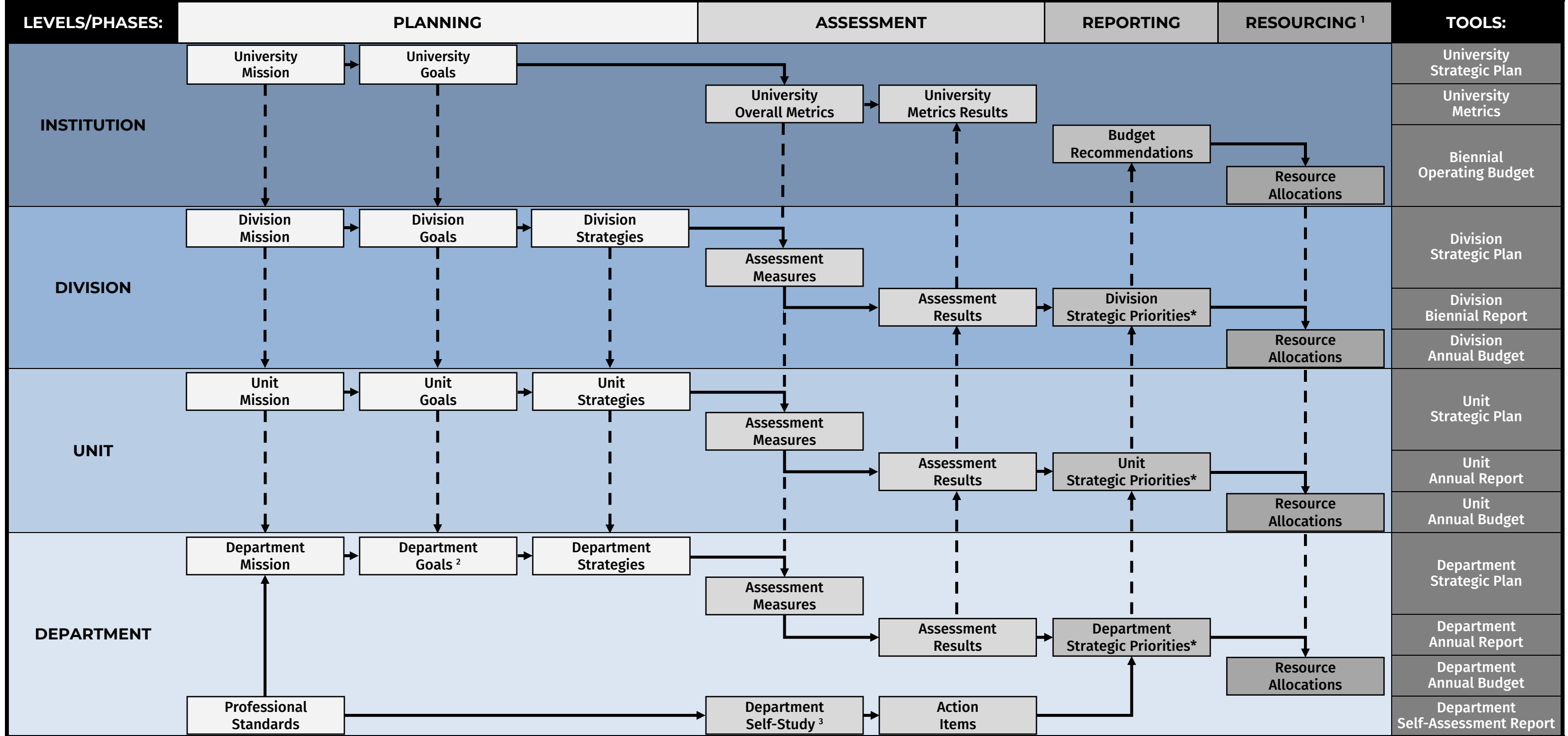


DIVISION STRATEGIC PLANNING MODEL — ENROLLMENT AND STUDENT SERVICES — WESTERN WASHINGTON UNIVERSITY



Line Key:
 —————> Directional relationships between components within levels
 - - - -> Directional relationships between components across levels

Notes:
 1. Resourcing occurs through a variety of institutional processes (see 'Division Resourcing Overview' document)
 2. Department goals may describe the cumulative outcomes of learning assessed at the individual level (i.e. learning outcomes assessment)
 3. Departments with specific accreditation requirements and review processes may be exempted from the self-study process

Last Updated: March 2020
 Questions? Matt Bryant x2982

*Strategic priorities may also include special initiatives identified at the department, unit, or division levels (see 'Special Initiatives' form)